

WMX SERIES

WMX-SM-15-30W-30K
WMX-SM-15-30W-40K
WMX-SM-15-30W-50K

LED OUTDOOR LIGHTING

WESTGATE
THE FUTURE IS HERE...AND IT'S QUITE BRIGHT!

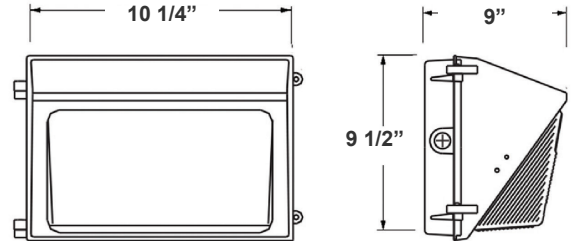


Customer Name: _____

Project Name: _____

Note: _____

Type: _____



10 1/4"(W) x 9 1/2"(H) x 9"(D)

Ideal for general site lighting, alleys, loading docks, doorway, pathway, and parking areas.

Features

- ADC12 Aluminum Heat Sink, Outdoor Powder Coating
- Multi-Power Switch is inside the Fixture
- 7-year warranty
- Prismatic Borosilicate Glass Lens

Technical Specifications

Electrical:

- Input Wattage: 15/20/25/30W
- Input Voltage: 120-277V AC 50/60Hz
- Input current: 0.35A
- Power factor: >0.9
- Efficacy: 130 LPW

Mechanical:

- ADC12 Aluminum Heat Sink, Outdoor Powder Coating
- Lens: Prismatic Borosilicate Glass Lens
- Same Footprint as Traditional HID Wall Packs
- Four 1/2" Hubs: 1 top, 1 on Each Side, 1 Rear
- Mounting: Wall Mounting
- Operating Temperature: -40°F ~ 104°F
- Lifespan: 70000 Hrs.
- IP rating: IP65, Wet Locations

Lighting:

- Dimming: 0-10V Dimming
- Multi-Power Switch is inside the Fixture
- Total Lumens: 4200LM Max.
- Color Temperature: 3000K/4000K/5000K
- CRI: >70

Applications:

- Ideal for general site lighting, alleys, loading docks, doorway, pathway and parking areas.
- Replace existing HID wall packs
- Great for use with photocell

Other Models:

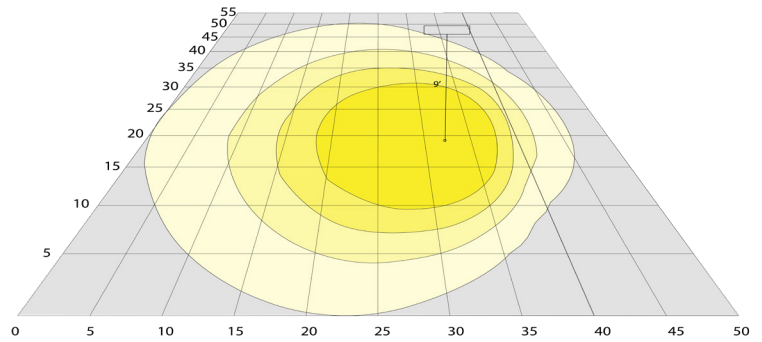
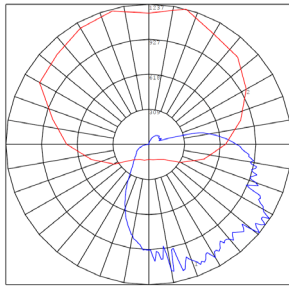
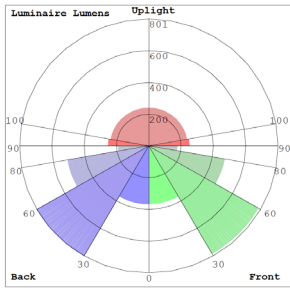
- 50W | 6800LM | WMX-MD-20-50W-30K
- 50W | 6800LM | WMX-MD-20-50W-40K
- 50W | 6800LM | WMX-MD-20-50W-50K
- 80W | 11200LM | WMX-MD-20-80W-30K
- 80W | 11200LM | WMX-MD-20-80W-40K
- 80W | 11200LM | WMX-MD-20-80W-50K
- 120W | 16500LM | WMX-LG-50-120W-30K
- 120W | 16500LM | WMX-LG-50-120W-40K
- 120W | 16500LM | WMX-LG-50-120W-50K



Phone: (877) 805-2252 | Fax: (877) 805-2252
www.westgatemfg.com |



Photometrics: WMX-SM-15-30W



BUG Rating: B1-U3-G2

Area 55'x 50' Mounting Height: 9'

Other Views:



Side View



Front View



Back View

Performance Table: WMX-SM-15-30W

MODEL NO.	Wattage	Voltage	Lumens	Color Temp.	BUG Rating	LPW
WMX-SM-15-30W-30K	15W	120-277V	1950LM	3000K 4000K 5000K	B1-U3-G2	130
WMX-SM-15-30W-40K	20W		2600LM			
WMX-SM-15-30W-40K	25W		3250LM			
WMX-SM-15-30W-50K	30W		3900LM			

Sample Ordering

- - - -

Accessories:

Blank = No Option For Accessories

Factory-Installed Options:

Blank = No Option For Accessories

- OPT-EM-OD1EXT= EXTERNAL EMERGENCY BACKUP BATTERY
- OPT-SEN-3MRLV-5= PROGRAMMABLE MICROWAVE (BI-LEVEL FOR 80W & UP)
- OPT-PC-B= BUTTON
- OPT-CLR-85= COLOR PAINT
- WEC-8RC= REMOTE CONTROL
- OPT-TRS-T20= TAMPER RESISTANT SCREW

FACTORY-INSTALLED OPTIONS:



OPT-EM-OD1EXT



OPT-PC-B



WEC-8RC



OPT-SEN-3MRLV-5



COLOR CHART: * Choose from one of our Premium Colors with no set-up fee.

Gloss:



SILVER METALLIC
70 GLOSS
T357-GR105



SILVER METALLIC
30 GLOSS
T353-GR06



DARK RED 90
GLOSS
P009-RD02



INTERNATIONAL
ORANGE 90
GLOSS
T009-OG26



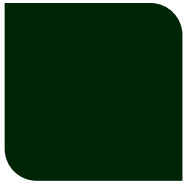
SAFETY ORANGE
90 GLOSS
T009-OG01



YELLOW 90
GLOSS
T009-YL14



YELLOW 90
GLOSS
T009-YL01



TRAFFIC GREEN
70 GLOSS
T007-GN16



GREEN 70 GLOSS
T007-GN13



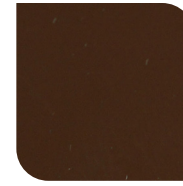
GREEN 60 GLOSS
C006-GN03



BLUE 90 GLOSS
T009-BL01



DARK BLUE 80
GLOSS
T008-BL20



RAL 8028 TERRA
BROWN 90 GLOSS
C209-BR358

Hammer:



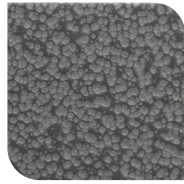
WHITE HAMMER
T013-WH09



BEIGE HAMMER
T013-BG38



GREY HAMMER
C013-GR08



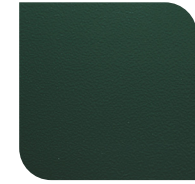
SILVER
HAMMERTONE
T064-GR05



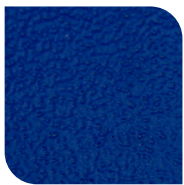
BLACK HAMMER
T013-BK62



RED HAMMER
T013-RD15



GREEN HAMMER
T013-GN220



BLUE HAMMER
T013-BL468



BRONZE HAMMER
T012-BR161

Texture:



WHITE TEXTURE
C031-WH120



FLINT GRAY
TEXTURE
T243-GR522



BLACK TEXTURE
C241-BK109



RED TEXTURE
T241-RD129



BLUE TEXTURE
C241-BL544



OIL RUBBED
BRONZE TEXTURE
T291-BR251

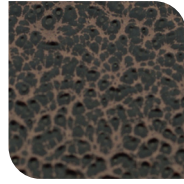
Vein:



BLACK/WHITE
VEIN
T075-WH34



SILVER VEIN
T375-BK26



COPPER VEIN
EXTERIOR
T075-BK211



GOLD VEIN
T375-BK10



COPPER VEIN
T375-BK07

